

SONY

Hi-Fi Products
Service Bulletin

Sony Service Company - Technical Services
A Division of Sony Corporation of America
Sony Drive, Park Ridge, New Jersey 07656

Model: D3, DT3

No. 28

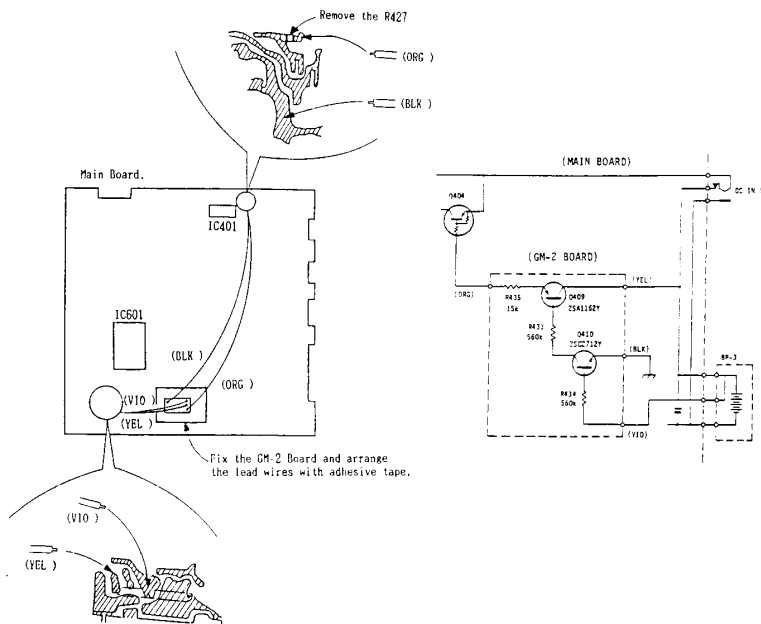
Subject: Battery Fluid Is Spilled

Date: July 29, 1988

Symptom:
(111)

Battery fluid may be spilled when operating the unit from the AC adaptor with the batteries connected.

Solution: Remove the resistor (R427, 15k Ω) and install the "GM-2" board assembly. The "GM-2" board part number is X-4918-821-1.



Reference: AU88016

PRINTED IN U.S.A.
CSA-13788-7